

Chateau la Commanderie

Region: Languedoc

Sleeps: 21 **Bedrooms:** 10 **Bathrooms:** 6



Overview

The imposing chateau in Mirepoix retains its original spirit of an ancient medieval castle, but modernised to create a family home. It has been beautifully decorated by the current artist-owner and her family, creating a grand but comfortable setting for a holiday, family or company event. With a beautiful private pool, 4 hectares of land and 10 bedrooms, this is the perfect place for your holidays.

(Can be rented for 28 with extra cottage via Ref: MIRE101)

Ideal wedding venue.

Description

The imposing chateau retains its original spirit of an ancient medieval castle, but modernised to create a family home. It has been beautifully decorated by the current artist-owner and her family, creating a grand but comfortable setting for a holiday, family or company event.

The chateau sleeps up to 21 people in the main building in ten double/twin bedrooms, (and 8 extra people in four double/twin rooms in an independent cottage on the grounds - view Ref: MIRE101)

There are grand reception rooms, including the Knights' Hall, a large library for dining or events; the billiard room; modern kitchens and bathrooms all surrounded by manicured gardens with a swimming pool.

Our Chateau accommodation is ideal for holidays, family get-togethers, special events, seminars or corporate meetings. Catering can be arranged at additional cost through our network of private chefs and caterers who specialise in weddings and larger celebrations or events.

The whole chateau and cottage are available year-round for a weekend, week or a longer stay. We can offer other configurations to suit your needs, ie: whole ground floor for 10 people, ground floor plus cottage for 18 people, or gardens only. We can create special packages for you, please contact us.

Chateau la Commanderie

Region: Languedoc

Sleeps: 21 **Bedrooms:** 10 **Bathrooms:** 6

Layout

The chateau sleeps up to 29 people: 21 people can be accommodated in the main building in ten double/twin bedrooms, and 8 people in four double/twin rooms in an independent cottage on the grounds (View Ref: MIRE101 for the main Chateau + Cottage - this property page is for the Chateau for 20 ONLY).

Description of bedrooms

Château

Downstairs

-Separate toilets with washbasin leading off the entrance hall

-Sphyngé bedroom, double bed with en-suite bathroom with shower, washbasin and separate toilet with washbasin

-Parisian suite : bedroom with two single beds with en-suite bathroom , with bathtub, washbasin and toilet and leading to Leleu bedroom with double bed

-Yellow bedroom with two single beds

-Arlequin bedroom with two single beds

Both of the above share :

-Full bathroom with bathtub, shower, washbasin and toilet

First floor

-Separate toilet with washbasin leading from the corridor

-Commander's bedroom with double bed

-Pink bedroom with queen-size bed with en-suite bathroom , with shower, washbasin and toilet.

-Blue bedroom with one single bed and one queen-size bed with en-suite bathroom with shower, washbasin and toilet.

- Venitian suite with double bed with en-suite bathroom with shower, washbasin and toilet and leading to the American bedroom with double bed

More Info

We offer a full wedding and corporate event or seminar service for larger groups of people. This can include receptions, seminar rooms, bed and breakfasts, and meals as required.

Prices include wifi, heating, water, electricity, garden maintenance, use of pool, cleaning at the end of your stay. €3000 security deposit required and returnable at the end of your stay. Tourist taxes not included.

WEDDING CELEBRATION:

Chateau la Commanderie is the ideal fairytale location to host your wedding celebration and a memorable reception.

Up to 29 privileged guests can be accommodated in beautiful atmospheric medieval surroundings for a romantic destination for as long as you wish. (View Ref: MIRE101 for 29 guests)

The chateau can comfortably host up to 130 people for your reception using our large banqueting hall or the grounds of the chateau. We open up the whole chateau for your guests to enjoy for the most beautiful day of your life.

We can provide bespoke, flexible packages for accommodation. Our local network of contacts include specialists that provide wedding planning, flowers, food, wines and champagnes, vintage cars, horse-drawn carriages, music... Whatever you might need for your unique day.

We offer freedom of choice. It's your day, you choose what you want, stay as long as you wish for a unique and memorable wedding celebration. Please contact us with your wedding requests and we will do our best to advise.

Features

- WiFi Internet
- Winter Heating
- Golf Course Nearby
- Private Pool

Chateau la Commanderie

Region: Languedoc

Sleeps: 21 **Bedrooms:** 10 **Bathrooms:** 6

-4 folding single beds

-2 cots

Wedding features:

Accommodate 29 people comfortably

Catered reception up to 130 people

Seating and tables for up to 150 people

North terrace and gardens for parties

Large front lawn for marquees

Self catering or private Chef for the time you are here

Full use of gardens and pool

Off road parking in a tree lined avenue in the grounds

Wedding suppliers:

Wedding planners

Catering

Local wines

Florists

Hairdressers and beauticians

Cars and chauffeurs

Horse-drawn carriages

Photographers

Musicians

IT ALL STARTED IN THE 13TH CENTURY

La Commanderie was built in the 13th century by Guillaume de Plaigne, a Cathar Lord, who took an active role in the Battle of Avignonet and later joined the besieged stronghold at Montsegur.

In the 16th century, Barthelemy de Plaigne extended the Chateau by creating the Salle des Chevaliers. His daughter Anne de Plaigne married the Count de Pibrac in 1642. She sold Plaigne to François-Paul de Béon-Massès-Cazaux, head of the order of St John in Toulouse, who, in 1685, established this domain as a Commanderie of the Knights of Malta. It remained in their ownership until the French Revolution.

In the 19th century, the chateau belonged to Mr de Nicol,

Chateau la Commanderie

Region: Languedoc

Sleeps: 21 **Bedrooms:** 10 **Bathrooms:** 6

who modernized the building, and it stayed in this family for a century, up until his last descendant Violette de Ferluc.

Chateau la Commanderie

Region: Languedoc

Sleeps: 21 **Bedrooms:** 10 **Bathrooms:** 6

Location

Chateau la Commanderie is just 15 minutes from the medieval bastide of Mirepoix, 45 minutes from historic Carcassonne and the modern metropolis of Toulouse and their airports. The nearest village is Plaigne.

BETWEEN THE PYRENEES AND THE MEDITERRANEAN

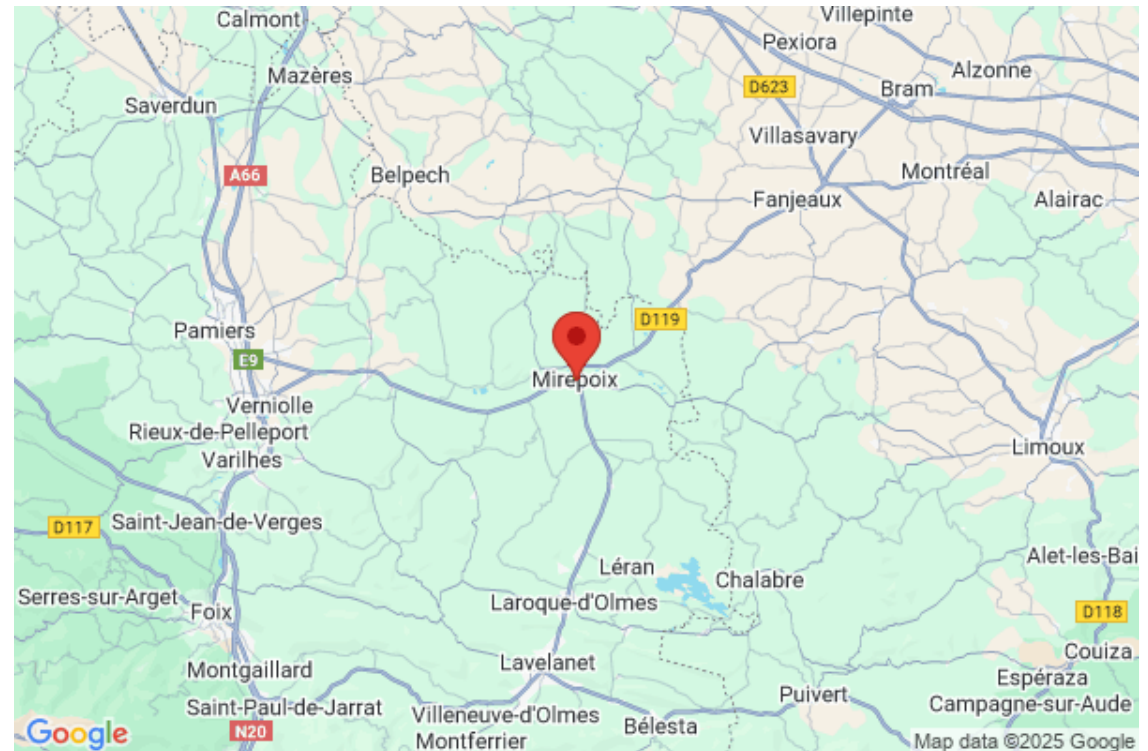
It is a paradise for those who love hiking, horse riding, fishing, hunting, alpine and cross-country-skiing.

History lovers will find this region similar to Tuscany, rolling hills and valleys littered with Romanesque ruins and 13th century churches.

La Commanderie is close to the picturesque town of Mirepoix and Castelnaudary, home of world famous cassoulet, and Montsegur: center of the Cathar culture.

Drive 40 minutes and you are in the medieval City of Carcassonne (a world heritage site), or Chateau de Foix at the foot of the Pyrenees.

40 minutes North West and you can be in Toulouse (the 'pink city'), the home of Airbus, Space City and many other cultural and tourist attractions. Locally produces wines and food include foie-gras, cassoulet,...

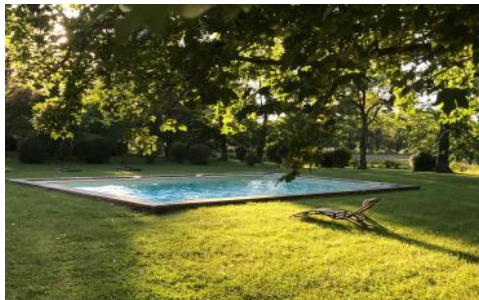


Chateau la Commanderie

Region: Languedoc

Sleeps: 21 Bedrooms: 10 Bathrooms: 6

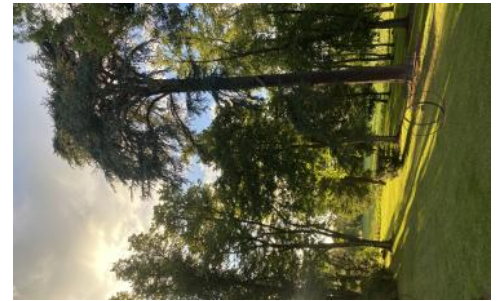
Photos



Chateau la Commanderie

Region: Languedoc

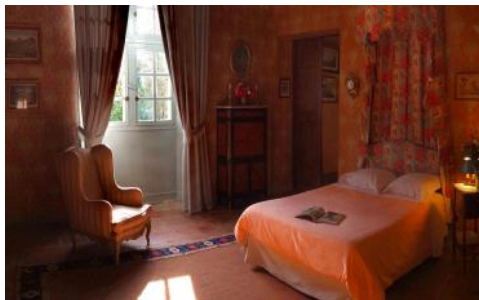
Sleeps: 21 Bedrooms: 10 Bathrooms: 6



Chateau la Commanderie

Region: Languedoc

Sleeps: 21 Bedrooms: 10 Bathrooms: 6



Chateau la Commanderie

Region: Languedoc

Sleeps: 21 Bedrooms: 10 Bathrooms: 6



Chateau la Commanderie

Region: Languedoc

Sleeps: 21 **Bedrooms:** 10 **Bathrooms:** 6

