

Villa Ines

Region: PORTUGAL

Sleeps: 12 **Bedrooms:** 4 **Bathrooms:** 4



Overview

Part of an exclusive, secured domain in the Carvalhal area of Comporta, south of Lisbon, this cabana-style, wooden villa lends itself to easy living offering ample indoor and outdoor space, a chic look, a private, heatable pool within a relaxing forested landscape, just minutes' walking distance from the village centre and the beach.

Description

Carvalhal, Comporta: A perfect family home in the tranquil setting of the Comporta forest featuring 4 bedrooms and a private, heatable, salt-water pool close to the village centre and the beaches.

This impressive 3,000 m2 designer property is located in Carvalhal, inside a small luxury gated community comprising 28 villas of similar standing, offering a concierge service at the entrance and night security watch. With approximately 400 m2, concrete flooring and high ceilings, the house is very spacious and has a marvellous sunlight exposure thanks to the massive glazed sliding doors and skylights. The house was designed with respect for the natural surroundings and using local material, particularly wood. There's also a guest bathroom near the kitchen. A corridor connects this space to the bedrooms and all of them face the outside garden. There are 4 suites in total, 3 of them with double beds and another room with 2 triple bunk beds for up to 6 kids (the top beds are accessible through a small wooden ladder). Despite being located inside a condo, the house ensures all the privacy as it is set inside a natural reserve and surrounded by an immense pine wood forest. Outside there's a big porch with a living space and a round dining table, a heatable salt-water pool with sun loungers and a wooden cabin with a small bathroom for support.

The house is remarkably close to Pego and Carvalhal beaches, both offering restaurant and beach infrastructure support. In the town of Carvalhal, a few minutes walk, you can find a variety of services such as supermarket, bakery, fish market, restaurants, stationery and magazine shop, pharmacy, bicycle and car rental among others. Approximately 10 minutes drive is Comporta town with many shops, restaurants and attractions. Melides and Comporta beaches also offers great beach and restaurants. A number of golf courses can be found in this area, especially the new Dunes Golf Club.

Villa Ines

Region: PORTUGAL

Sleeps: 12 **Bedrooms:** 4 **Bathrooms:** 4

Layout

ACCOMMODATION

(400 m2):

All on one floor:

Large, open plan living/ dining/ modern fully equipped kitchen/ breakfast area, flat screen TV, fireplace, L-shaped sofa, table for 10, indoor winter garden, wooden timbered ceiling, tall floor-to-ceiling doors to terrace and pool area, views on both sides.

Laundry room.

Guest W. C.

Bedroom 1: Double room, en suite shower room, door to terrace.

Bedroom 2: Double room, en suite shower room, door to terrace.

Bedroom 3: Double room, en suite shower room, door to terrace.

Bedroom 4: Triple bunk room (2 bunk beds + 2 trundle beds underneath) sleeping up to 6 people, en suite shower room.

Grounds:

3,000 m2 landscaped gardens within forested grounds.

Private, infinity, salt-water,

heatable pool (Roman steps), sand area, wooden cabin with pool W. C. Large covered terrace with outdoor dining and living furniture. Parking in the drive.

More Info

Features

- Aircon
- WiFi Internet
- Heatable Pool
- Golf Course Nearby
- Private Pool

Villa Ines

Region: PORTUGAL

Sleeps: 12 **Bedrooms:** 4 **Bathrooms:** 4

Location

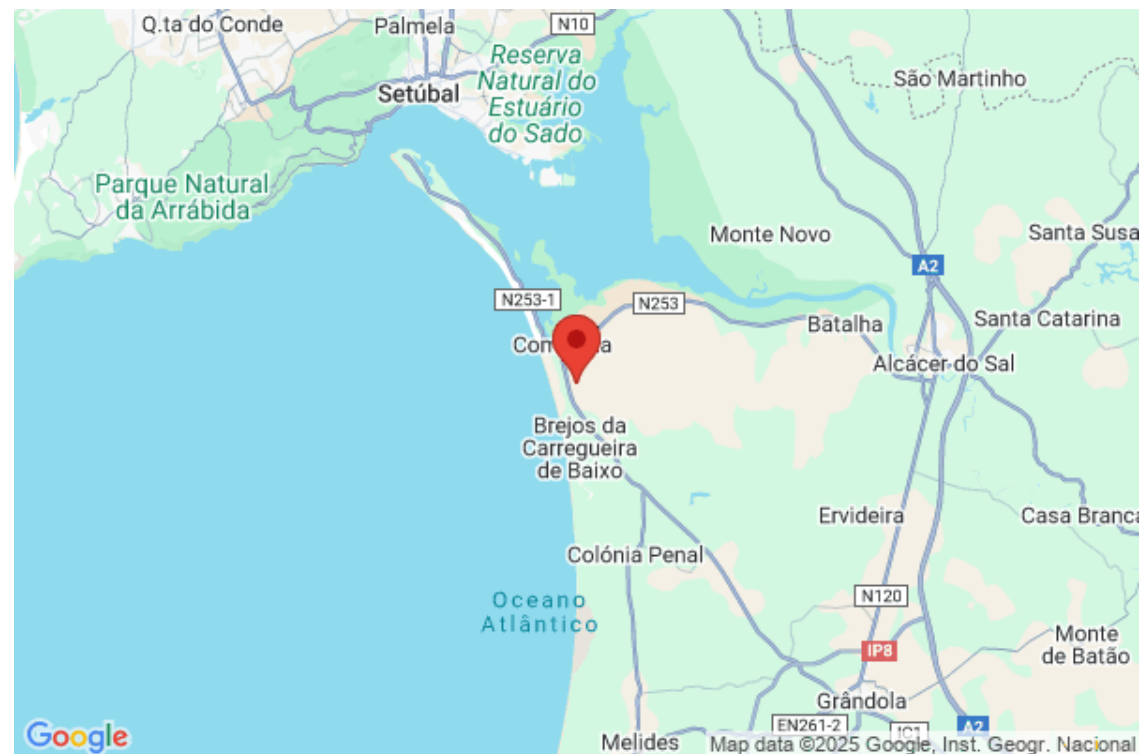
DISTANCES

Avlaki bay (2 tavernas, sailing and water sports): 5 minutes' walk.

Kassiopi (bars, nightlife, shopping): 7 minutes' drive.

San Stefanos (tavernas on the beach, cocktail bars): 10 minutes' drive.

Corfu Old town: 1 hour and 15 minutes' drive.



Villa Ines

Region: PORTUGAL

Sleeps: 12 Bedrooms: 4 Bathrooms: 4

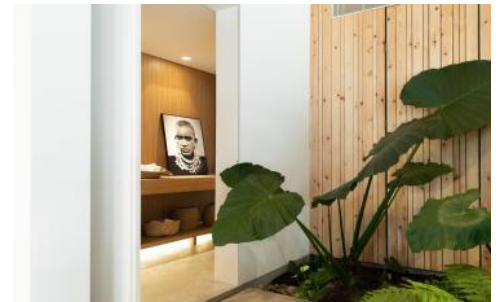
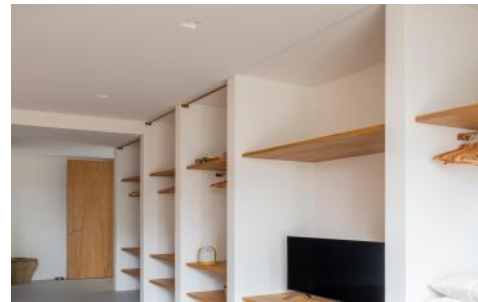
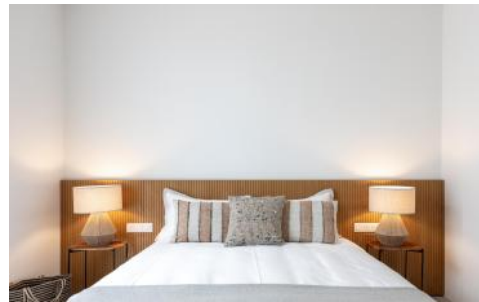
Photos



Villa Ines

Region: PORTUGAL

Sleeps: 12 Bedrooms: 4 Bathrooms: 4



Villa Ines

Region: PORTUGAL

Sleeps: 12 **Bedrooms:** 4 **Bathrooms:** 4

