

# Villa Glazia

**Region:** Paros

**Sleeps:** 16 **Bedrooms:** 8 **Bathrooms:** 6

---



## Overview

Nestled near Santa Maria beach, this stylish twin-villa estate offers stunning sea views and a serene Cycladic garden. Featuring private infinitypools, shaded outdoor dining, and spacious open-plan living areas, it's the perfect retreat to relax and enjoy the peaceful beauty of Paros with comfort and privacy.

## Description

Santa Maria (North East): Refined twin-villa retreat with private pools, sea-view terraces, and shaded dining steps from Santa Maria beach and minutes from Naoussa.

This stylish two-villa property combines traditional Cycladic charm with modern comfort, offering a peaceful setting just steps from the sea. With a total of 442m of living space, it can host up to 16 guests across spacious bedrooms and open-plan living areas. Each villa features a private pool with floating daybeds, fully equipped kitchens, and shaded outdoor dining areas ideal for easy, laid-back island living.

Located on the quiet northeastern coast of Paros, the villas are just a short walk from Santa Maria beach and a 6-minute drive from the lively town of Naoussa. Guests can enjoy days by the sea, explore nearby villages, or simply relax by the pool and take in the views. It's an ideal spot for a relaxed Greek island escape.

# Villa Glazia

**Region:** Paros

**Sleeps:** 16 **Bedrooms:** 8 **Bathrooms:** 6

---

## Layout

ACCOMMODATION  
(442 sqm)

### VILLA 1

#### Pool Level

Entrance hall, open-plan living room (TV, A/C, fireplace, sea & pool view, terrace & pool access)

Dining area

Bar with stools

Fully equipped open-plan kitchen

Guest W. C.

Bedroom 1: Double bedroom (A/C, sea & pool view, terrace & pool access) with ensuite bathroom

Bedroom 2: Double bedroom (A/C, sea & pool view, terrace & pool access)

Bedroom 3: Double bedroom (A/C, sea & pool view, terrace & pool access)

Shared bathroom for Bedrooms 2 & 3

#### Guest House Upper Level (external access):

Bedroom 4: Double bedroom (A/C, TV, sea view) with ensuite bathroom, sofa (may accommodate a child), private entrance

## More Info

## Features

- Private Pool

# Villa Glazia

**Region:** Paros

**Sleeps:** 16 **Bedrooms:** 8 **Bathrooms:** 6

---

## VILLA 2

### Pool Level

Entrance hall, open-plan living room (TV, A/C, fireplace, sea & pool view, terrace & pool access)

Dining area

Bar with stools

Fully equipped open-plan kitchen

Bedroom 1: Double bedroom (A/C, sea view, terrace & pool access) with ensuite bathroom

Bedroom 2: Double bedroom (A/C, side terrace access) with ensuite bathroom

Bedroom 3: Double bedroom (A/C, sea view, terrace & pool access) with ensuite bathroom

### Upper Level

Bedroom 4: Double bedroom (A/C, TV, sea view) with ensuite bathroom (shower), sofa (may accommodate a child)

## OUTSIDE

L-shaped private infinity pool (one per unit), floating on-pool daybeds, sunbeds, seating & lounge areas, shaded dining area per unit

## LOCAL AREA

Santa Maria Beach: 10m

Nearest Town: (Naoussa) 3.5 km

Paros Airport: 25 km

# Villa Glazia

**Region:** Paros

**Sleeps:** 16 **Bedrooms:** 8 **Bathrooms:** 6

---

Parikia Port: 15 km

# Villa Glazia

**Region:** Paros

**Sleeps:** 16 **Bedrooms:** 8 **Bathrooms:** 6

---

## Location



### DISTANCES:

Walk to bakers (under 10 mins) and short drive to delicatessen, grocers, fishmonger and butchers.

Cabris - 2km

Grasse - 5km

Valbonne 25 minutes drive

Cannes - 25 minute drive

Nice Cte dAzur Airport - 40 - 50 minute drive

# Villa Glazia

Region: Paros

Sleeps: 16 Bedrooms: 8 Bathrooms: 6

## Photos

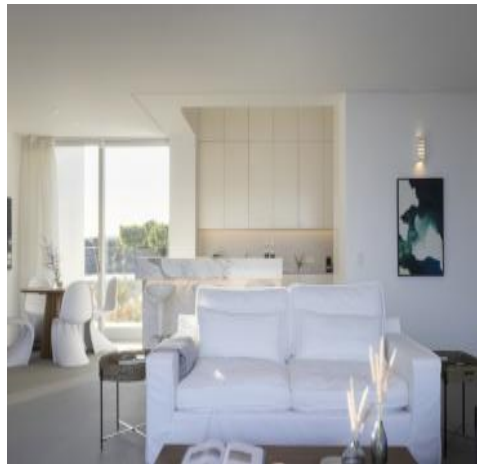


# Villa Glazia

Region: Paros

Sleeps: 16 Bedrooms: 8 Bathrooms: 6

---

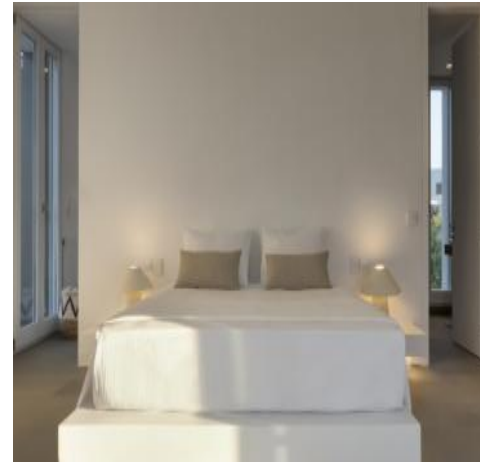


# Villa Glazia

Region: Paros

Sleeps: 16 Bedrooms: 8 Bathrooms: 6

---

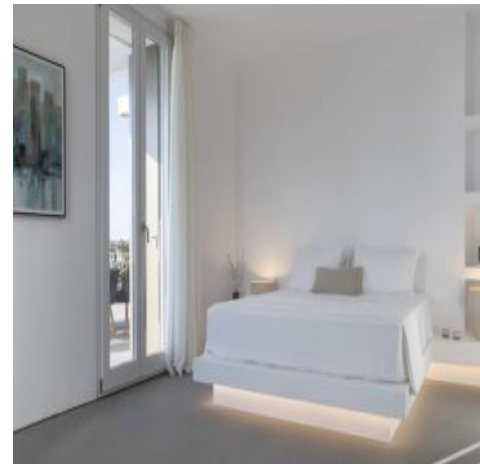
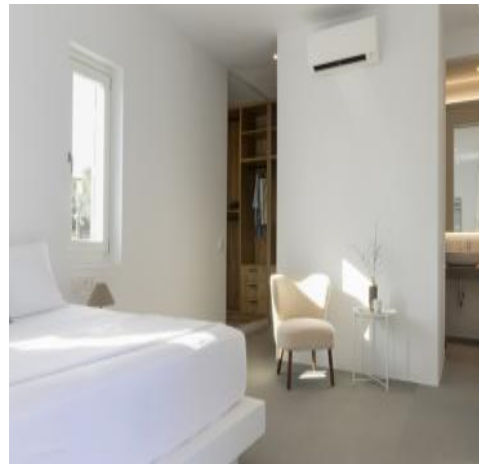


# Villa Glazia

Region: Paros

Sleeps: 16 Bedrooms: 8 Bathrooms: 6

---



# Villa Glazia

Region: Paros

Sleeps: 16 Bedrooms: 8 Bathrooms: 6

---

