

# Villa Phyllis

**Region:** Paros

**Sleeps:** 10 **Bedrooms:** 5 **Bathrooms:** 4

---



## Overview

Set just moments from the sandy shores of Santa Maria, this serene villa offers sea views, a private pool, and a breezy Cycladic atmosphere. With open-plan living spaces, shaded outdoor dining, and a peaceful garden setting, it's the perfect spot to relax and enjoy the natural beauty of Paros where sea breeze and simple luxury meet.

## Description

Santa Maria (North East): Inviting villa with a private pool, sea-view terrace, shaded outdoor dining area and a relaxed garden setting just steps from Santa Maria beach.

This spacious 350m villa comfortably hosts up to 10 guests across three levels, offering a relaxed setting with sea views and easy indoor-outdoor flow. The open-plan living area connects to the pool terrace, where you'll find shaded lounge and dining spaces, a BBQ area, and a private pool. With six well-appointed bedrooms, a fully equipped kitchen, and thoughtful design throughout, the villa is ideal for laid-back summer living.

Located just 200m from Santa Maria beach on the northeast coast of Paros, the villa offers easy access to the sea and peaceful surroundings. The lively town of Naoussa is only a 6-minute drive away, with its charming harbour, shops, and restaurants. Whether you want to unwind by the pool or explore the island, this is a great base for enjoying Paros at your own pace.

# Villa Phyllis

**Region:** Paros

**Sleeps:** 10 **Bedrooms:** 5 **Bathrooms:** 4

---

## Layout

ACCOMMODATION

(350 sqm)

### Pool Level

Entrance hall, open-plan living room (TV, A/C, fireplace, sea & pool view, terrace & pool access)

Dining area

Fully equipped open-plan kitchen with direct access to outdoor dining area

Guest W. C.

Bedroom 1: Double bedroom (A/C, sea view, terrace & pool access) with ensuite bathroom

Bedroom 2: Double bedroom (A/C, sea view, terrace & pool access) with ensuite bathroom

### Upper Level

Bedroom 3: Double bedroom (A/C, TV, sea view, balcony) with ensuite bathroom

### Lower Ground Level

Playroom / TV area

Bedroom 4: Double bedroom, A/C

Bedroom 5: Double bedroom, A/C

Shared bathroom

## More Info

## Features

- Private Pool

# Villa Phyllis

**Region:** Paros

**Sleeps:** 10 **Bedrooms:** 5 **Bathrooms:** 4

---

Staff Room: Bunk bedroom (A/C) with ensuite bathroom

## **OUTSIDE**

Private pool, shaded seating & lounge area, shaded dining area, BBQ area

## **LOCAL AREA**

Nearest Airport: Paros Airport 25 km

Nearest Port: Parikia 15 km

Nearest Town/Village: Naoussa 4 km

Nearest Beach: Santa Maria 200m

# Villa Phyllis

**Region:** Paros

**Sleeps:** 10 **Bedrooms:** 5 **Bathrooms:** 4

---

## Location



### DISTANCES:

Walk to bakers (under 10 mins) and short drive to delicatessen, grocers, fishmonger and butchers.

Cabris - 2km

Grasse - 5km

Valbonne 25 minutes drive

Cannes - 25 minute drive

Nice Cte dAzur Airport - 40 - 50 minute drive

# Villa Phyllis

Region: Paros

Sleeps: 10 Bedrooms: 5 Bathrooms: 4

## Photos



# Villa Phyllis

Region: Paros

Sleeps: 10 Bedrooms: 5 Bathrooms: 4

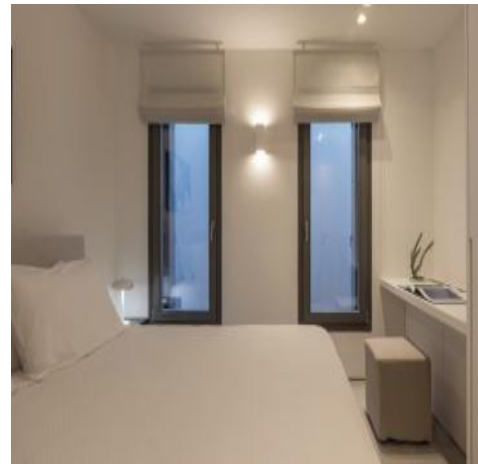
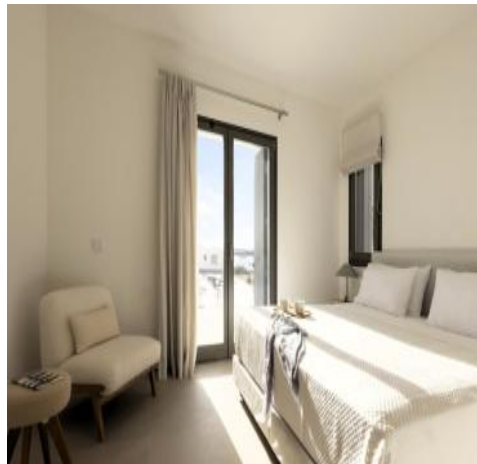
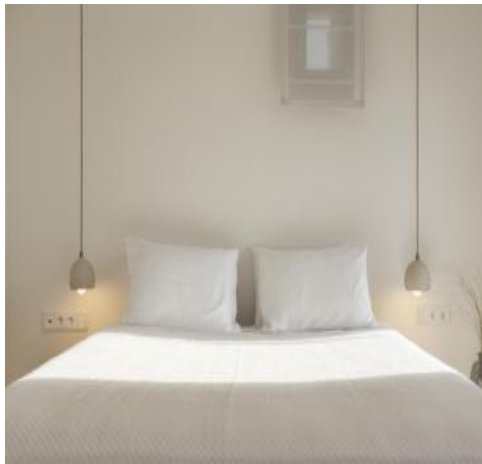


# Villa Phyllis

Region: Paros

Sleeps: 10 Bedrooms: 5 Bathrooms: 4

---



# Villa Phyllis

Region: Paros

Sleeps: 10 Bedrooms: 5 Bathrooms: 4

---

